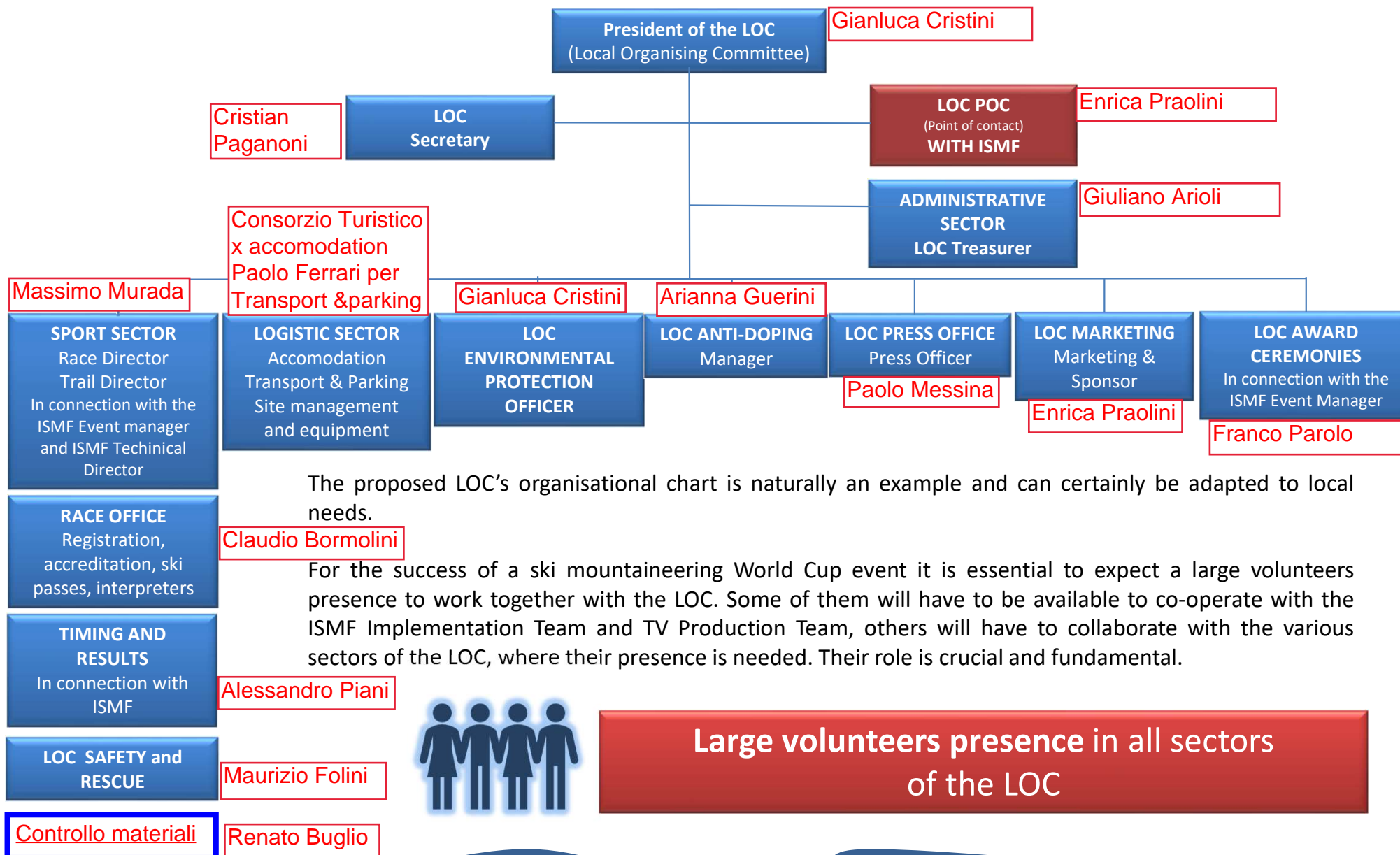


# LOC - Local Organiser Committee



The proposed LOC's organisational chart is naturally an example and can certainly be adapted to local needs.

For the success of a ski mountaineering World Cup event it is essential to expect a large volunteers presence to work together with the LOC. Some of them will have to be available to co-operate with the ISMF Implementation Team and TV Production Team, others will have to collaborate with the various sectors of the LOC, where their presence is needed. Their role is crucial and fundamental.



**Large volunteers presence in all sectors of the LOC**